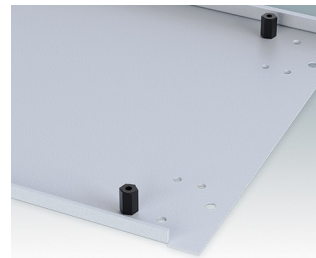
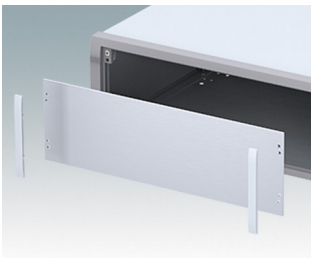
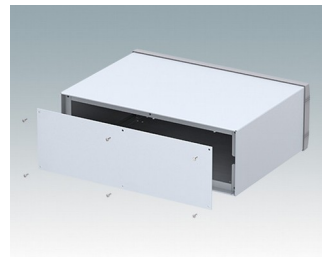
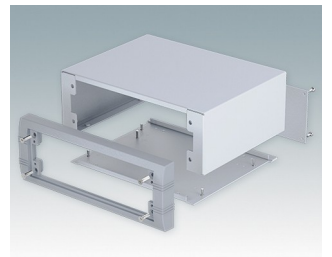
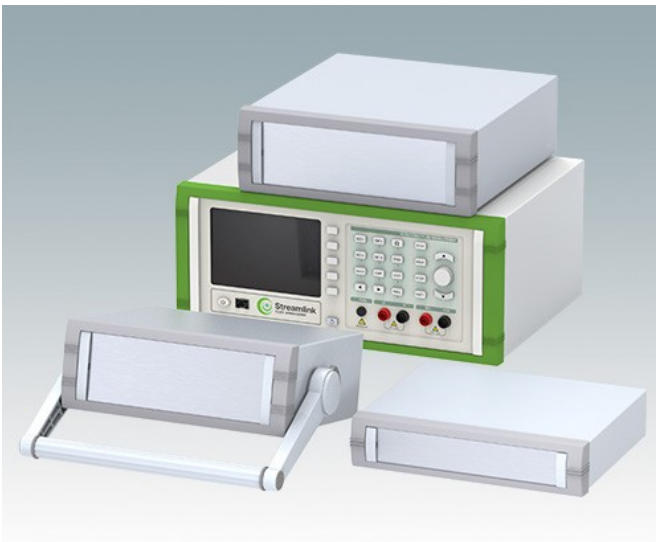


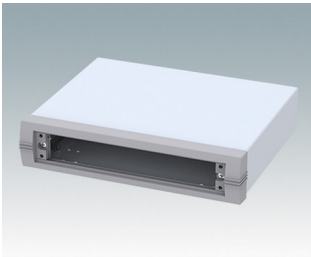
Moderne Instrumentengehäuse für tragbare oder für Tisch-Anwendungen.

- Attraktive, robustes und vielseitiges Aluminium design in sechs standardgrößen
- Mit oder ohne Aufstell-/ Tragebügel
- Der Druckguss-Frontrahmen ist am Gehäusekorpus aus abgekantetem Aluminium montiert
- Abnehmbare Rückwand - vertieft zum Schutz von Verbindern, Schaltern usw.
- Montagelöcher im Boden für Leiterkarten, Chassis usw.
- Frontplatten aus eloxiertem Aluminium (Zubehör)
- Vier rutschfeste GummifüÙe im Lieferumfang enthalten
- Wird vormontiert geliefert
- Optionale GehäusefüÙe mit KippfüÙe aus ABS (Zubehör).

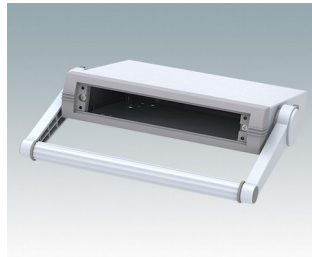
Bestellen Sie Ihre eigene kundenspezifische Version. [Hier erfahren Sie mehr >>](#)



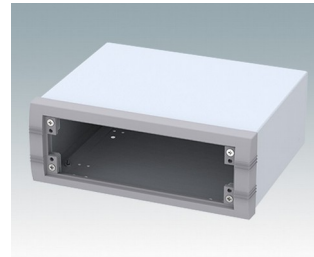
Versionen



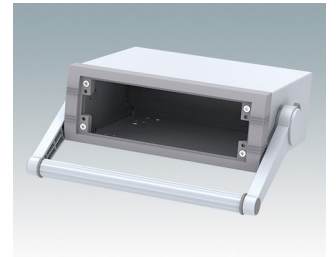
M5623005
UNIMET 1
Aluminium
Lichtgrau/fenstergrau RAL
7035/7040
230x190x50mm



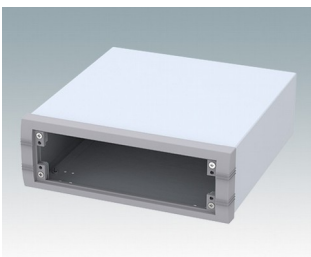
M5623025
UNIMET 1H
Aluminium
Lichtgrau/fenstergrau RAL
7035/7040
230x190x50mm



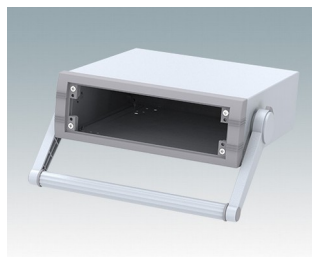
M5623105
UNIMET 2
Aluminium
Lichtgrau/fenstergrau RAL
7035/7040
230x190x85mm



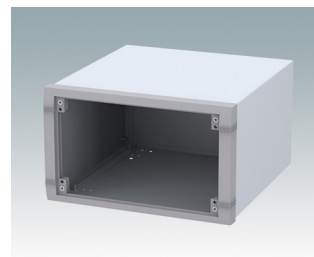
M5623125
UNIMET 2H
Aluminium
Lichtgrau/fenstergrau RAL
7035/7040
230x190x85mm



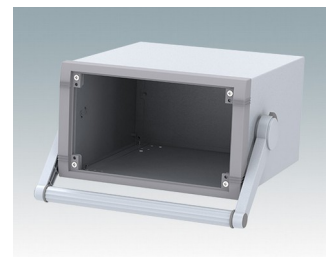
M5625105
UNIMET 3
Aluminium
Lichtgrau/fenstergrau RAL
7035/7040
250x260x85mm



M5625125
UNIMET 3H
Aluminium
Lichtgrau/fenstergrau RAL
7035/7040
250x260x85mm



M5625305
UNIMET 5
Aluminium
Lichtgrau/fenstergrau RAL
7035/7040
250x260x150mm



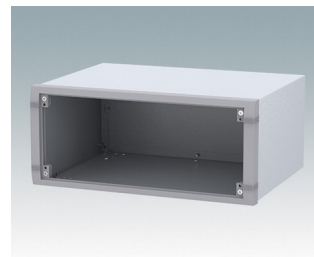
M5625325
UNIMET 5H
Aluminium
Lichtgrau/fenstergrau RAL
7035/7040
250x260x150mm



M5635205
UNIMET 4
Aluminium
Lichtgrau/fenstergrau RAL
7035/7040
350x260x120mm



M5635225
UNIMET 4H
Aluminium
Lichtgrau/fenstergrau RAL
7035/7040
350x260x120mm

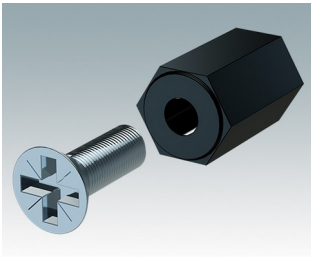


M5635305
UNIMET 6
Aluminium
Lichtgrau/fenstergrau RAL
7035/7040
350x260x150mm

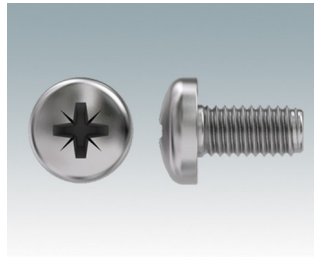


M5635325
UNIMET 6H
Aluminium
Lichtgrau/fenstergrau RAL
7035/7040
350x260x150mm

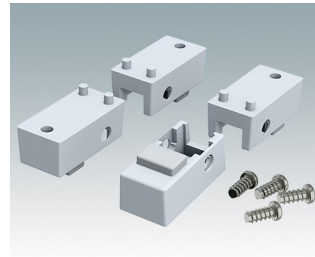
Zubehör



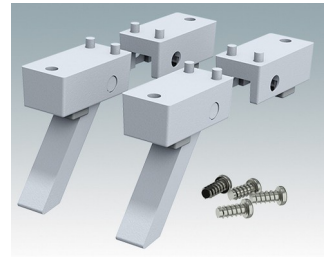
M5600001
Leiterkarten Montage-Set
PA 6
Schwarz RAL 9005



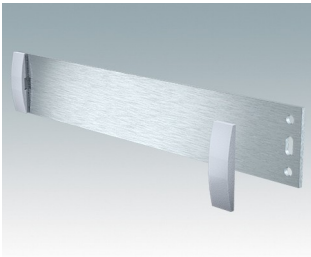
M5600010
PCB-Befestigungsschrauben,
M3
Stahlmetall
Verzinkt
6mm



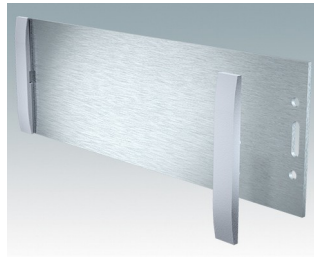
M5600015
Gehäusefüße, Set 1
ABS (UL 94 HB)
Lichtgrau RAL 7035
34x17x16mm



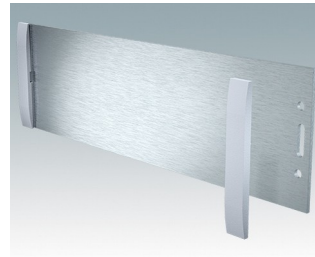
M5600045
Gehäusefüße, Set 2
ABS (UL 94 HB)
Lichtgrau RAL 7035
34x17x16mm



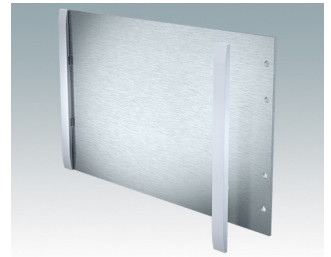
M5700607
Frontplatten-Set (1/1H)
Aluminium
Matt eloxiert
199,5x2x33,6mm



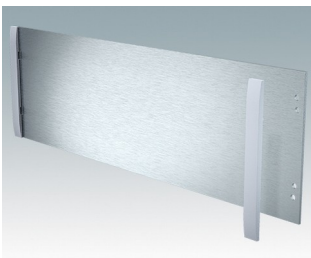
M5700608
Frontplatten-Set (2/2H)
Aluminium
Matt eloxiert
199,5x2x65,1mm



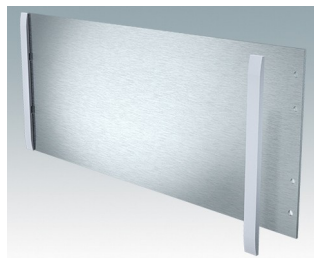
M5700613
Frontplatten-Set (3/3H)
Aluminium
Matt eloxiert
219,5x2x65,1mm



M5700616
Frontplatten-Set (5/5H)
Aluminium
Matt eloxiert
219,5x2x130,1mm



M5700620
Frontplatten-Set (4/4H)
Aluminium
Matt eloxiert
319,5x2x100,1mm



M5700621
Frontplatten-Set (6/6H)
Aluminium
Matt eloxiert
319,5x2x130,1mm

Technische Änderungen vorbehalten. © OKW Enclosures Ltd