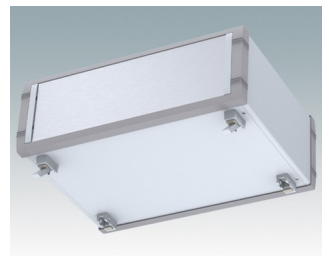
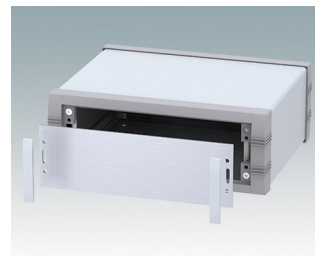
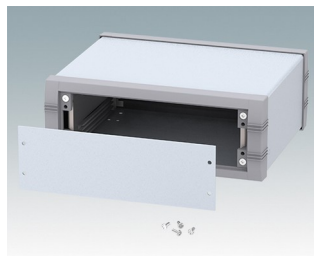
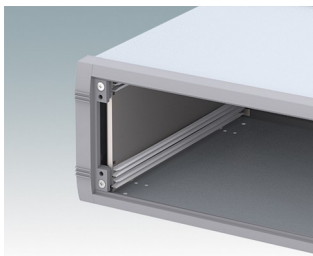
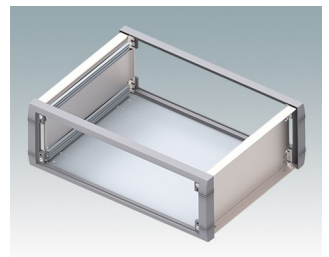
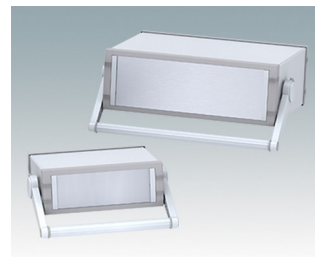
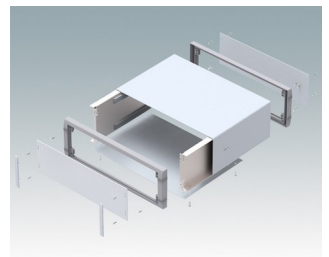
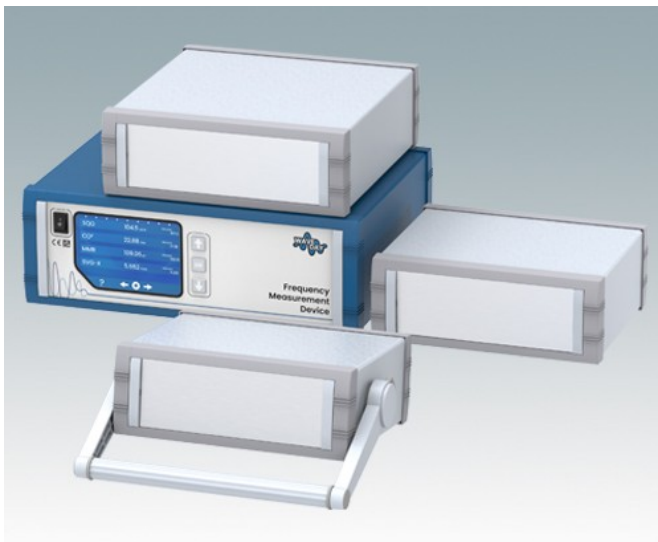


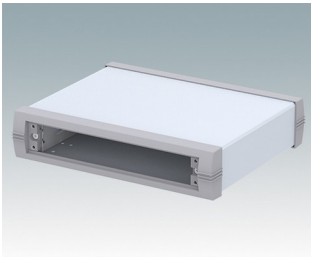
Attraktive und vielseitige Instrumentengehäuse

- Fortschrittliche Instrumentengehäuse aus Aluminium mit oder ohne Griffbügel
- Robustes und vielseitiges Design in sechs Größen
- Innenchassis mit horizontalen Führungspositionen für Leiterkarten zum Einschieben
- Inklusive vier Leiterkartenführungen aus Polyamid zum Einrasten
- Druckguss-Front- und -Rückrahmen am Gehäusekorpus aus abgekantetem Aluminium montiert.
- Abnehmbare Rückwand - vertieft zum Schutz von Verbindern, Schaltern usw.
- Vertiefte Frontplatte aus Aluminium (Zubehör)
- Vier rutschfeste GummifüÙe im Lieferumfang enthalten
- Optionale GehäusefüÙe mit KipfüÙe aus ABS (Zubehör)

Bestellen Sie Ihre eigene kundenspezifische Version. [Hier erfahren Sie mehr >>](#)



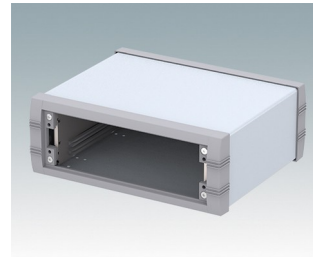
Versionen



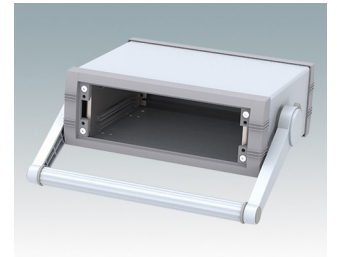
M5623015
UNIMET-PLUS 1
Aluminium
Lichtgrau/fenstergrau RAL
7035/7040
230x193x50mm



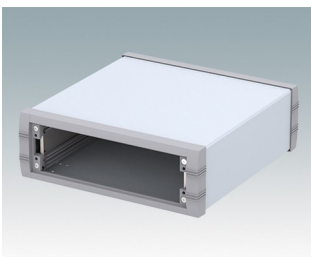
M5623035
UNIMET-PLUS 1H
Aluminium
Lichtgrau/fenstergrau RAL
7035/7040
230x193x50mm



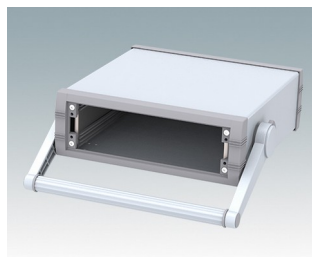
M5623115
UNIMET-PLUS 2
Aluminium
Lichtgrau/fenstergrau RAL
7035/7040
230x193x85mm



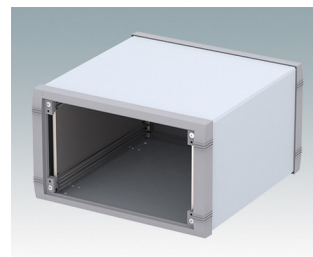
M5623135
UNIMET-PLUS 2H
Aluminium
Lichtgrau/fenstergrau RAL
7035/7040
230x193x85mm



M5625115
UNIMET-PLUS 3
Aluminium
Lichtgrau/fenstergrau RAL
7035/7040
250x263x85mm



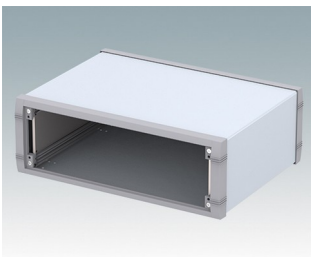
M5625135
UNIMET-PLUS 3H
Aluminium
Lichtgrau/fenstergrau RAL
7035/7040
250x263x85mm



M5625315
UNIMET-PLUS 5
Aluminium
Lichtgrau/fenstergrau RAL
7035/7040
250x263x150mm



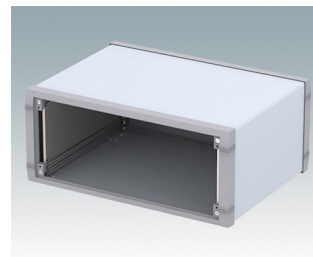
M5625335
UNIMET-PLUS 5H
Aluminium
Lichtgrau/fenstergrau RAL
7035/7040
250x263x150mm



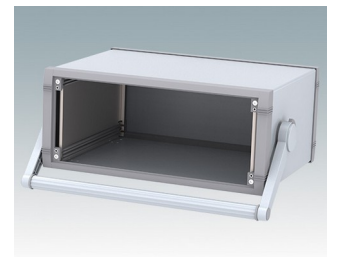
M5635215
UNIMET-PLUS 4
Aluminium
Lichtgrau/fenstergrau RAL
7035/7040
350x263x120mm



M5635235
UNIMET-PLUS 4H
Aluminium
Lichtgrau/fenstergrau RAL
7035/7040
350x263x120mm

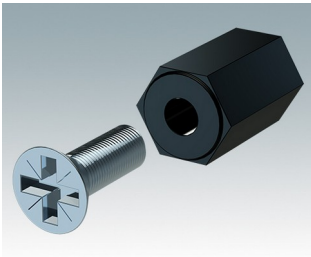


M5635315
UNIMET-PLUS 6
Aluminium
Lichtgrau/fenstergrau RAL
7035/7040
350x263x150mm

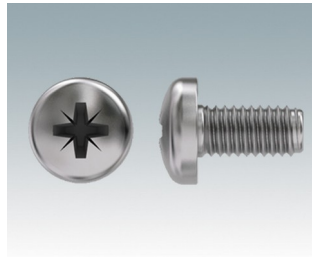


M5635335
UNIMET-PLUS 6H
Aluminium
Lichtgrau/fenstergrau RAL
7035/7040
350x263x150mm

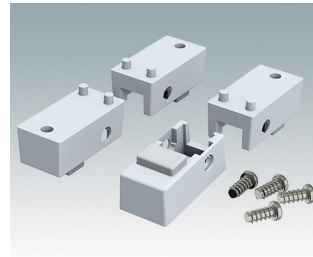
Zubehör



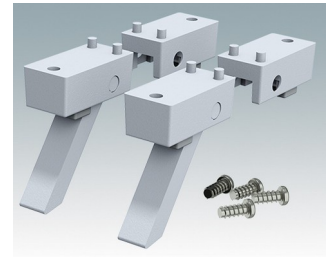
M5600001
Leiterkarten Montage-Set
PA 6
Schwarz RAL 9005



M5600010
PCB-Befestigungsschrauben,
M3
Stahlmetall
Verzinkt
6mm



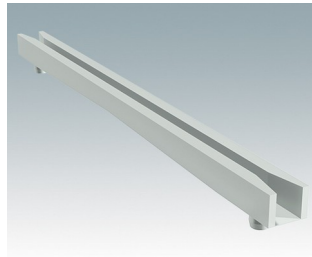
M5600015
Gehäusefüße, Set 1
ABS (UL 94 HB)
Lichtgrau RAL 7035
34x17x16mm



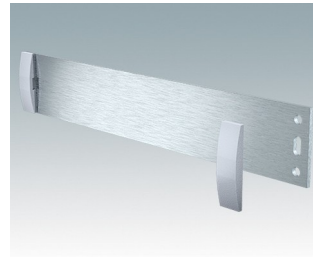
M5600045
Gehäusefüße, Set 2
ABS (UL 94 HB)
Lichtgrau RAL 7035
34x17x16mm



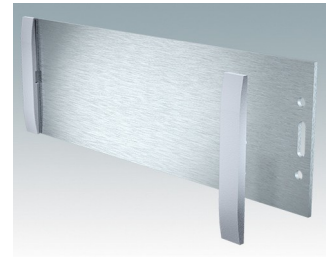
M5700202
Kartenführung, 216mm
PA 6/6 (UL 94 V-2)
Weiß



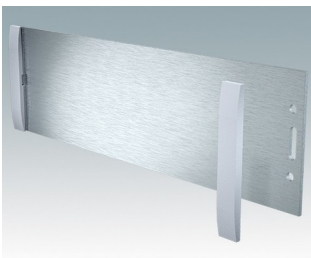
M5700203
Kartenführung, 102mm
PA 6/6 (UL 94 V-2)
Weiß



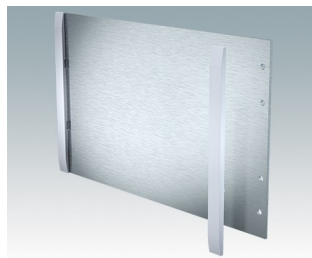
M5700607
Frontplatten-Set (1/1H)
Aluminium
Matt eloxiert
199,5x2x33,6mm



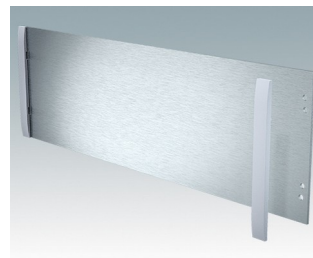
M5700608
Frontplatten-Set (2/2H)
Aluminium
Matt eloxiert
199,5x2x65,1mm



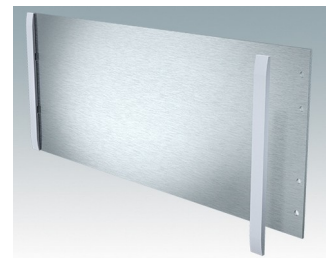
M5700613
Frontplatten-Set (3/3H)
Aluminium
Matt eloxiert
219,5x2x65,1mm



M5700616
Frontplatten-Set (5/5H)
Aluminium
Matt eloxiert
219,5x2x130,1mm



M5700620
Frontplatten-Set (4/4H)
Aluminium
Matt eloxiert
319,5x2x100,1mm



M5700621
Frontplatten-Set (6/6H)
Aluminium
Matt eloxiert
319,5x2x130,1mm

Technische Änderungen vorbehalten. © OKW Enclosures Ltd